



GAT MONTHLY MEMBERSHIP PROGRESS REPORT

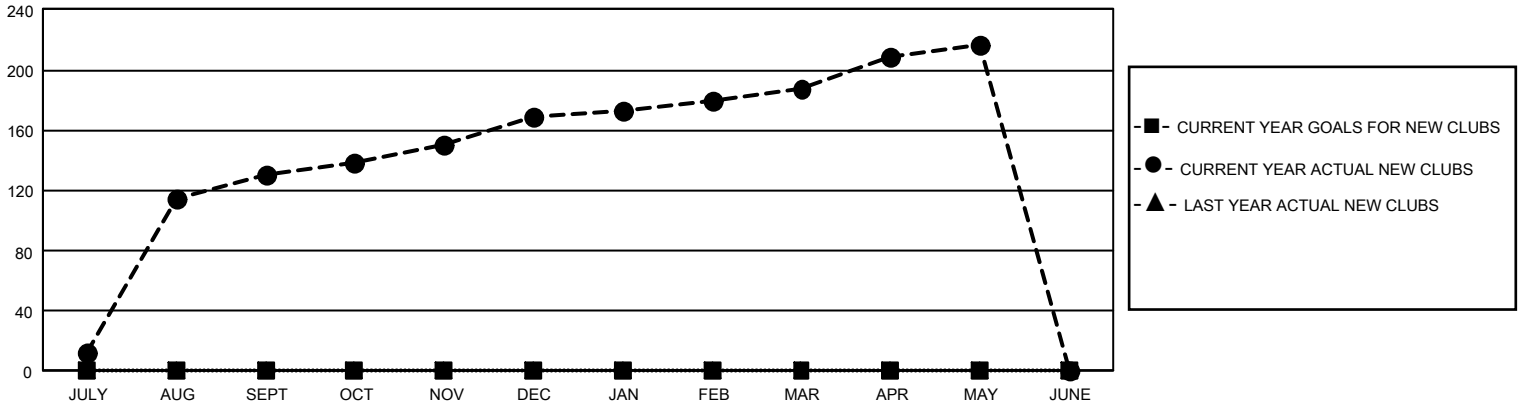
Results as of: 5/31/2023

GMT Constitutional Area 6, Group D

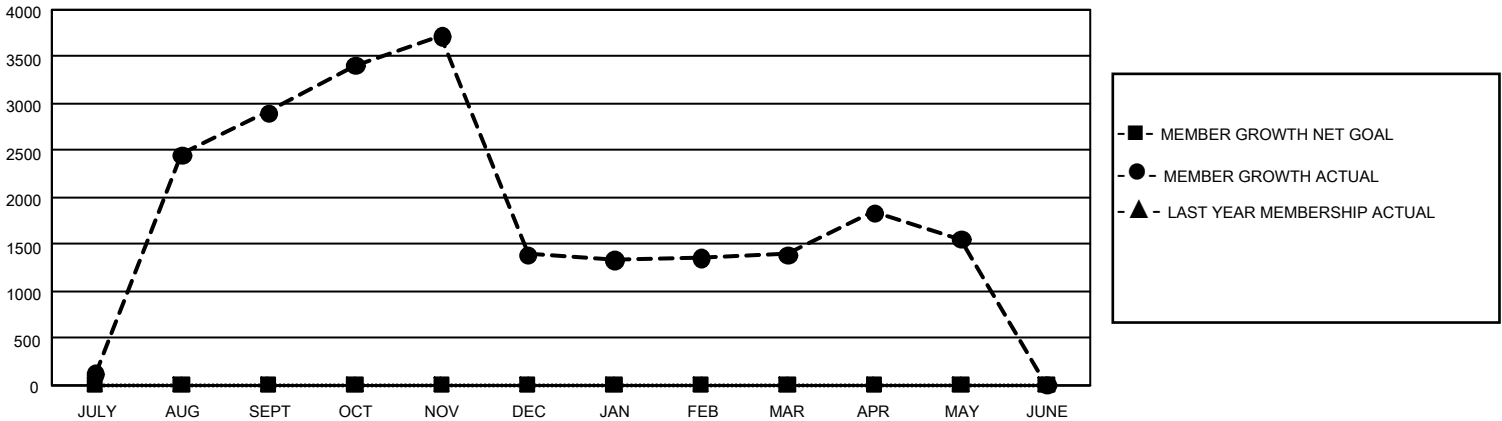
REPORT DOES NOT INCLUDE CLUBS IN UNDISTRICTED AREAS.

Clubs				Members			
RESULTS FOR 2022-2023				RESULTS FOR 2022-2023			
QUARTER	NEW CLUB GOAL	NEW CLUBS	DROPPED CLUBS	QUARTER	MEMBER GROWTH NET GOAL	MEMBER GROWTH ACTUAL	DROPPED MEMBERS ACTUAL (including transfers)
JULY/AUG/SEPT	0	130	32	JULY/AUG/SEPT	0	4,797	1,641
OCT/NOV/DEC	0	39	154	OCT/NOV/DEC	0	1,881	3,347
JAN/FEB/MAR	0	19	32	JAN/FEB/MAR	0	1,459	1,304
APR/MAY/JUNE	0	29	7	APR/MAY/JUNE	0	1,395	1,080

GOALS AND ACTUAL NEW CLUBS CUMULATIVE



GOALS AND ACTUAL MEMBERS CUMULATIVE



DROPPED CLUBS: 225	1,111 CLUBS OF 2,161 ADDED 1 OR MORE NEW MEMBERS	<u>GENDER DISTRIBUTION</u>	
		MALE 31,288 (69.51%) FEMALE 13,692 (30.42%) NON BINARY 1 (0.00%) PREFER NOT TO ANSWER 28 (0.06%)	
<u>DROPPED MEMBERS</u>		CLICK HERE FOR CUMULATIVE MEMBERSHIP DATA	TOTAL FAMILY UNIT MEMBERS 37,293
DECEASED 39 CLUB CANCELLED 2,204 OTHER 5,129 TOTAL 7,372			FAMILY MEMBERS PAYING HALF DUES 26,289